

Cloth Guide

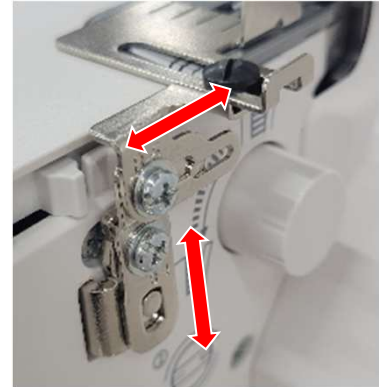


Part No. 202-525-008

This is NEW !

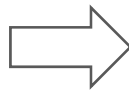
It is possible to adjust the position of the guide to
compatible with the new Sailing Line (MYLOCK 454D)

Note: Existing Cloth Guide (#202-038-009) cannot be
used with the new Sailing Line



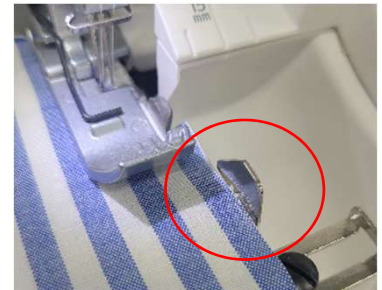
Point 1 Without Knife

It is useful for sewing directly flatlock and pintucking with decorative threads



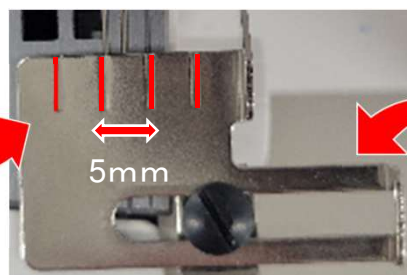
Point 2 With Knife

You can sew the fabric while keeping a certain cut-off allowance



Tips

This item has the guidelines
by 5mm clearance



Adjustable slide for
placement